



Simply Sweet And Sewn

Have a Simply Sweet and Crafty Day!

Website: <http://simplysweetbyb.com/>

Blog: <http://www.blog.simplysweetbyb.com/>

American Girl Doll Shirt



Supplies:

An old T-shirt or baby snap close shirt

Sew in Velcro 5.5"

Sewing machine and thread

Pins



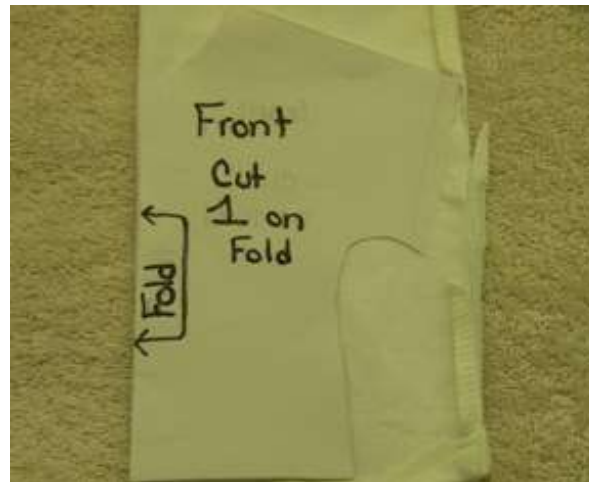
I had a baby snap close shirt that I used.

This one was a 3-6 month shirt.



I first cut off the top section that I couldn't use.

Next cut the side seams so I had two separate pieces to use.



I folded one section in half and placed my shirt front pattern piece on edge of the fold.

Pinned and cut this piece out.



For the Shirt back I used the second shirt piece and also folded this in half. I did not place this one on the fold though as we need two of these pieces.



Here are the cut out pieces



Lay the shirt front with right side facing up and place shirt back right side down. Pin in place on the shoulder seams.



Place on sewing machine and stitch 1/4" from edge.



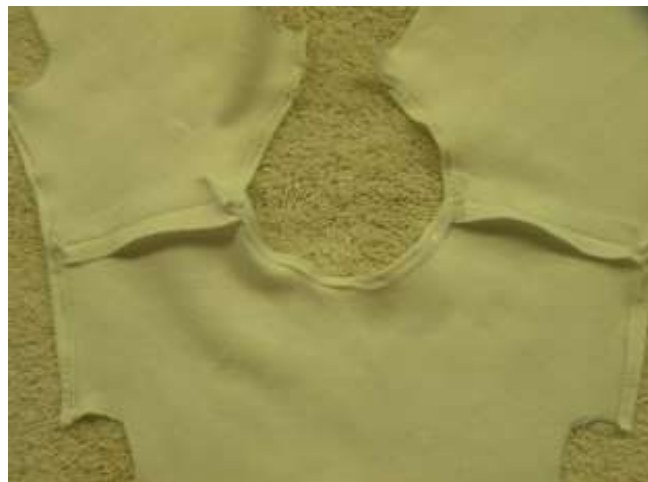
Open seams and press flat.



Fold under the arm hole and neck area 1/4" and press



Stitch close to the edge on arm hole and neck area.



View of stitched areas



With right sides together pin bottom edge of arm holes
and side seam.



Stitch $\frac{1}{4}$ " from edge on side seams.



On wrong side of shirt fold up $\frac{1}{4}$ " from bottom edge.

Press



Stitch close to the edge on bottom hem



Cut velcro 5.5"

Cut the strip in half.

(this makes the velcro not so bulky)



Looking at the back of the shirt

Fold over toward inside $\frac{1}{4}$ " on left side of shirt

Press



Pin soft side of velcro to left side of shirt inside.



Close up of left side of shirt



Fold Right side of shirt $\frac{1}{4}$ " toward inside Press

Place scratchy side of velcro on the top side of the shirt.
(not on top of the fold you just made. Right side of shirt)

Pin in place



View of both pinned sides



Sew around Velcro on both left and right sides

Add your appliqué, or other design idea!!